



ABBIATI
CASINO EQUIPMENT

ITALIAN QUALITY & DESIGN

EUROPEAN JETONS & PLAQUES

The Abbiati Company is privately owned by the Abbiati family and is based in Turin, Italy. Abbiati Casino Equipment has been in business in excess of 30 years and has had its professional articles for Casinos since 1976.

Abbiati has built up an international reputation and client base with almost every county and city that offers legalized gaming.

The company is on two sites within 50 metres from each other; one housing Office, Show Room and Production facilities and the other is used for assemblage and storage; with the option of expansion on both sites.

Abbiati Casino Equipment's main business is manufacturing and supplying Casino based equipment as used in live gaming: Roulette Wheels, Tables, Value Chips, Plaques and Jetons and all styles of gaming layouts (table felts) together with technical back up of full CAD design and technical services.

Our manufacturing facility is split into three main sections, all located under the same roof:

- Chips and Plaques are manufactured with the latest injection moulding machines, incorporating the latest RFID Technology using 13.56 MHz with PJM.
- Table and Roulette Wheel manufacture and assembly incorporate our CNC machining processes to ensure quality and precision, along with Layout (table felts) design and printing department for both wool and synthetic products.
- Electronic departments for the assemblage of Winning Number Displays, Laser Wheels and Independent electronic levelling systems for Roulette wheels.

All our manufacturing processes are supported by our Graphic and CAD Design department, to ensure Italian Quality and Design.

Quality, Service and Security are prime objectives for the Abbiati Company, which has secure rooms and high surveillance for the final assembly of the value chips incorporating RFID.

Our consistent growth and success stands as a witness of our continued commitment to deliver high quality, flawless products and services.

President
Giovanni Abbiati



RFID (radio frequency identification)

Abbiati Casino Equipment, a licensee of PJM 3.0 technology, offers a gaming currency with integrated RFID solution using 13.56 MHz PJM 3.0 enabled tags for plaques and jetons; that allows the operator to have total security of the plaque as every tag has its own signature/ DNA to distinguish it from another ie Cash, NN (various series) and Junket.

This, together with the ability of identifying and verifying each movement of the plaque in real time, gives the operator peace of mind when issuing the high value plaque on to the casino floor.

Abbiati will continue to manufacture and design products using the most sophisticated materials and equipment the market has to offer.

RFID

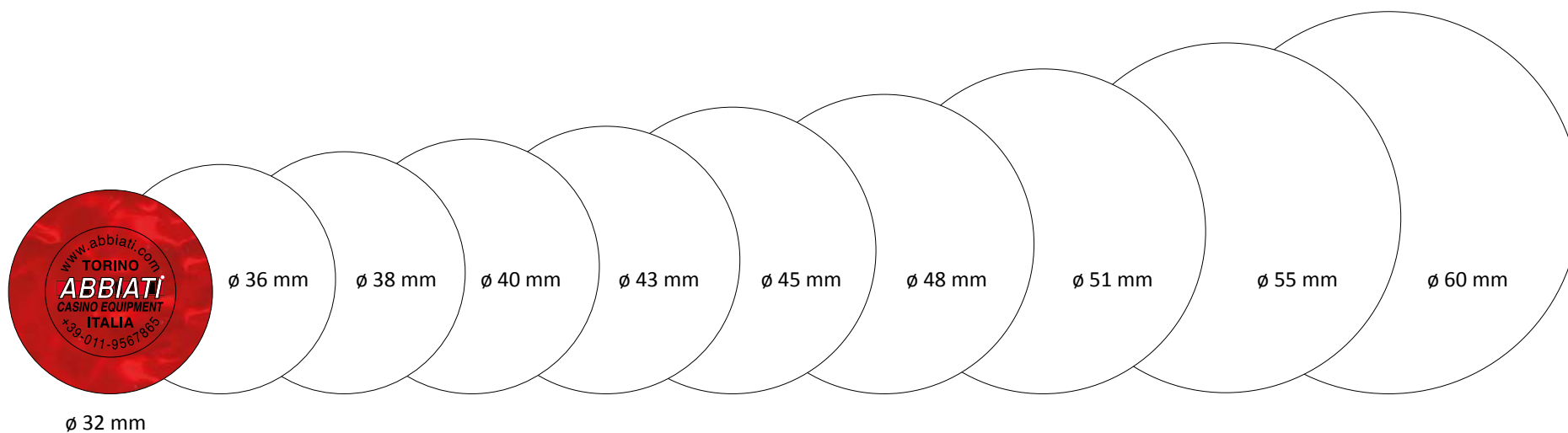
is a must-have solution

**RFID PLAQUES**

EUROPEAN STYLE JETONS



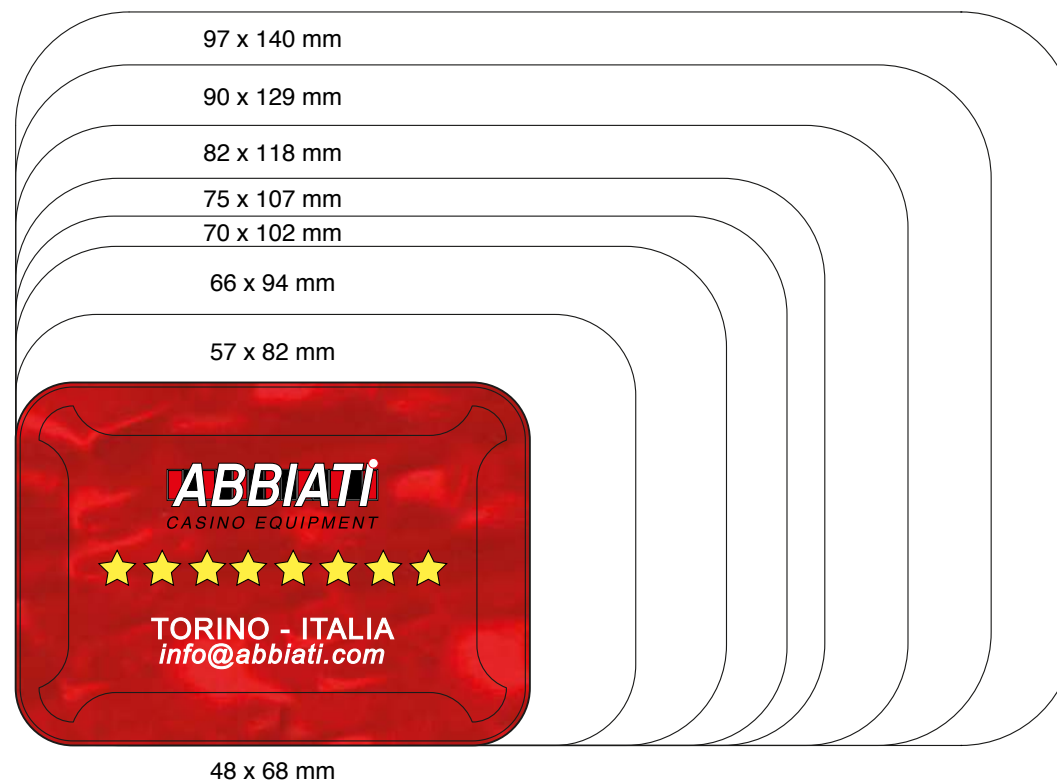
EUROPEAN STYLE JETONS



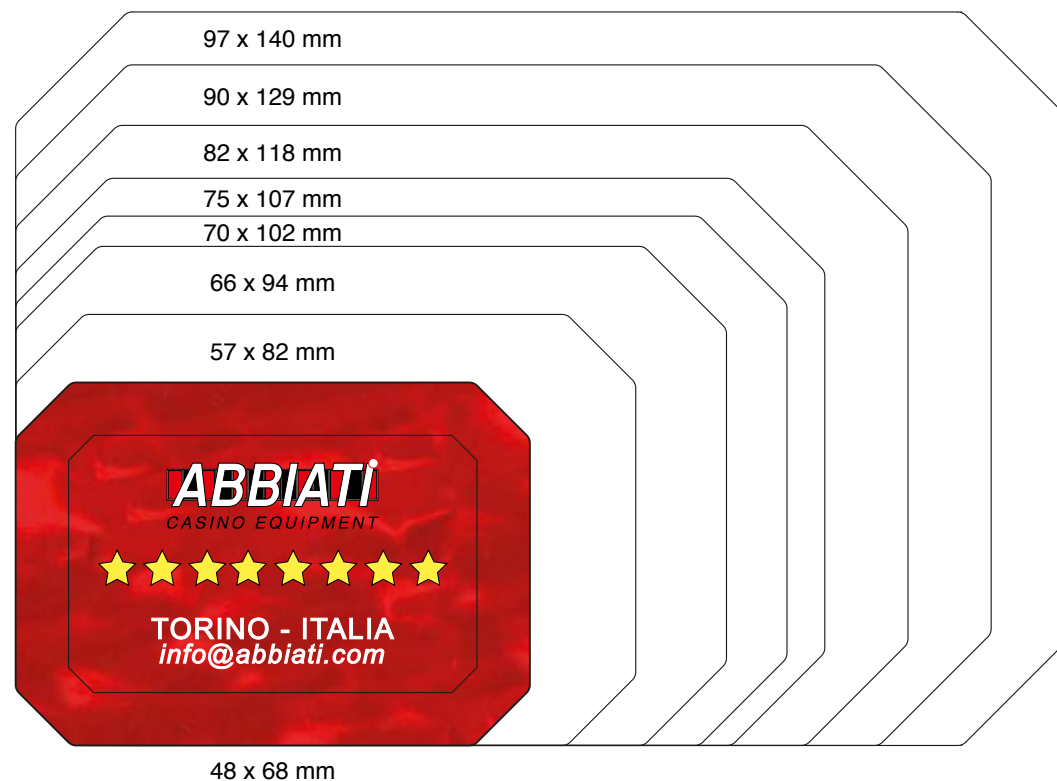
EUROPEAN STYLE PLAQUES



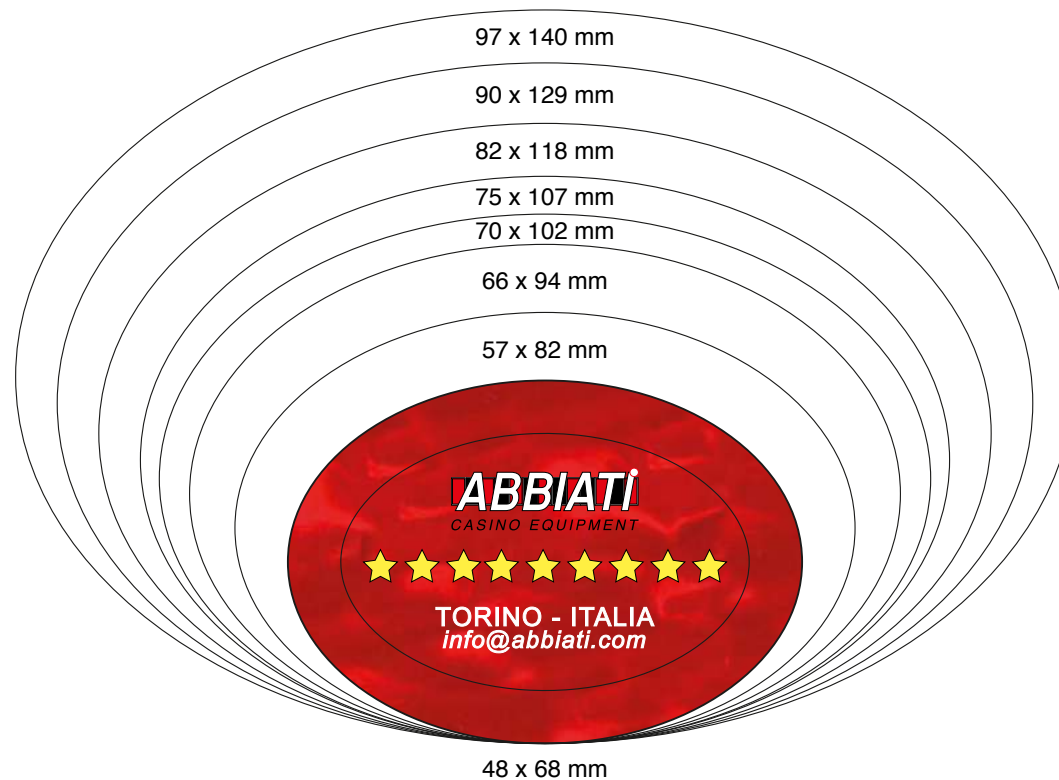
RECTANGULAR - ROUND CORNER PLAQUES



RECTANGULAR - CUT CORNER PLAQUES



OVAL PLAQUES



SQUARE - ROUND CORNER PLAQUES



70 x 70 mm



SECURITY SYSTEM

ABBIATI Security Plaques

Diamond or Crystal - Gold with Hologram - Filigree



GOLD WITH HOLOGRAM

FILIGREE

DIAMOND or CRYSTAL

ABBIATI Security Detection

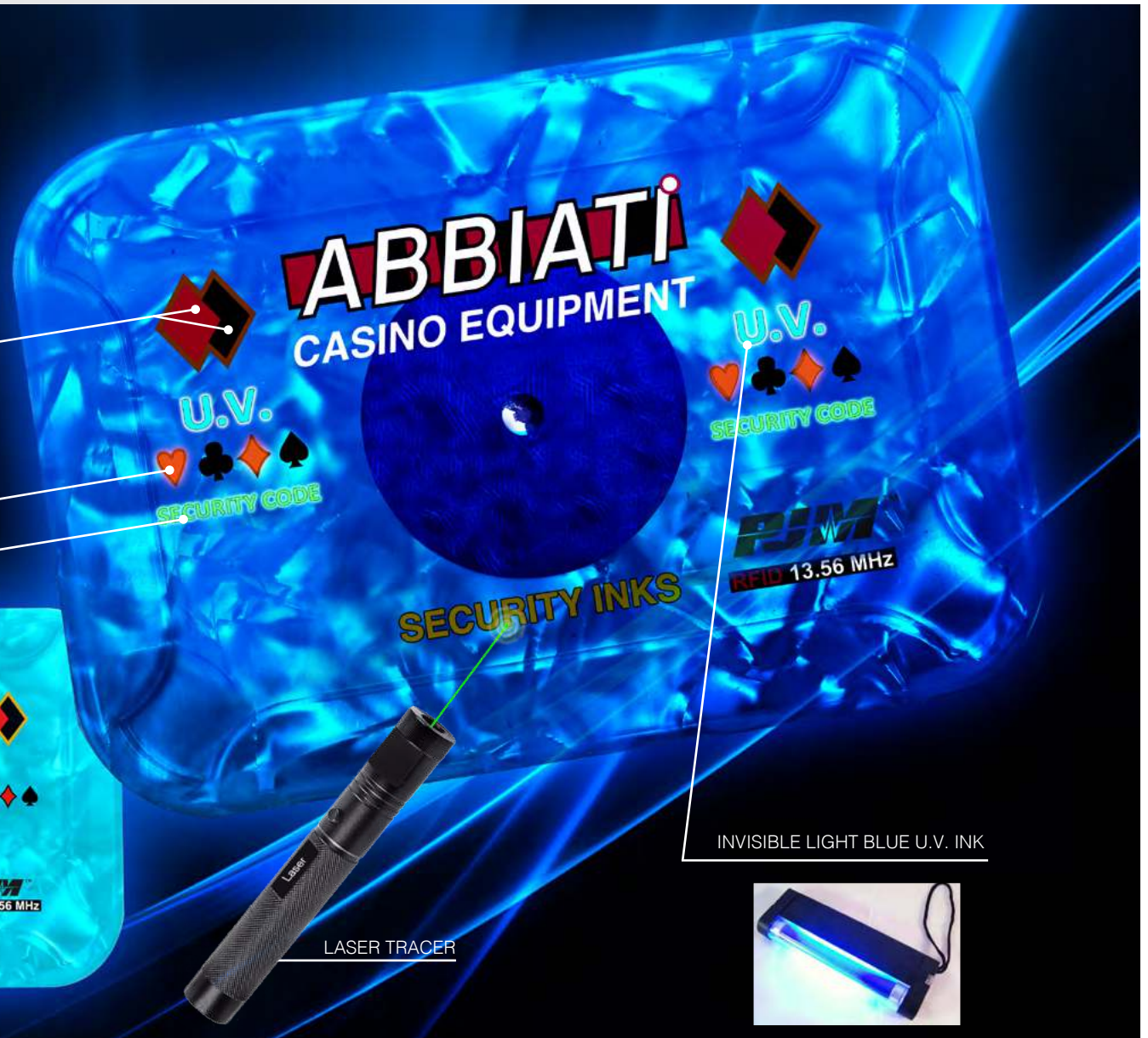
UV security INK - Magnetic INK - Laser Tracer



RED & BLACK MAGNETIC INK

RED U.V. INK ACTIVATED IN ORANGE FLUO

INVISIBLE YELLOW U.V. INK



INVISIBLE LIGHT BLUE U.V. INK

LASER TRACER



SECURITY FEATURES



TRANSPARENT LUNETTE



TULLE - LACE FILAMENT



SERIAL NUMBER
ONE OR BOTH SIDES



BI-COLOUR STRIPE
HORIZONTAL OR VERTICAL



TRI-COLOUR STRIPE
HORIZONTAL OR VERTICAL

LASER TRACER

RED U.V. INK ACTIVATED IN ORANGE

INVISIBLE YELLOW U.V. INK



O.V.I. (Optical Variable Ink)

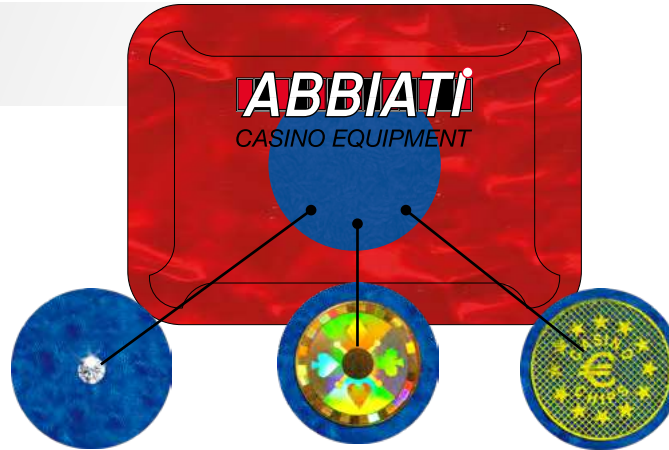
INVISIBLE LIGHT BLUE U.V. INK

BLACK & RED MAGNETIC INK

SECURITY FEATURES



TRANSPARENT LUNETTE



DIAMOND or CRYSTAL

GOLD WITH HOLOGRAM

FILIGREE



SERIAL NUMBER
ONE OR BOTH SIDES



BI-COLOUR STRIPE
HORIZONTAL OR VERTICAL



TULLE - LACE FILAMENT



TRI-COLOUR STRIPE
HORIZONTAL OR VERTICAL



INVISIBLE LIGHT BLUE U.V. INK

RED U.V. INK ACTIVATED IN ORANGE

INVISIBLE YELLOW U.V. INK

LASER TRACER

BLACK - RED MAGNETIC INK

O.V.I. (Optical Variable Ink)

EUROPEAN STYLE JETONS & PLAQUES

Customised Products - Samples



CENTRAL LAYER



Central Layer
Standard White



Central Layer
Black



Central Layer
Coloured



Central Layer
Double Liner

CENTRAL LAYER INSERTS



Coloured Central Layer
+ **Multiple Central Layer Insert**



Coloured Central Layer
+ **Double Central Layer Insert**

CENTRAL LAYER INSERTS



Coloured Central Layer
+ **Short Side Layer Insert Only**



Coloured Central Layer
+ **Long Side Double Layer Insert Only**



Coloured Central Layer
+ **Long Side Layer Insert Only**

SET RECOGNITION SAMPLE

Match design and colours to improve set recognition

CASH



Match graphic
or stripe colour to
Layer Inserts



Use different
Central Layer Colour
to recognize CASH/NN

NON-NEGOTIABLE

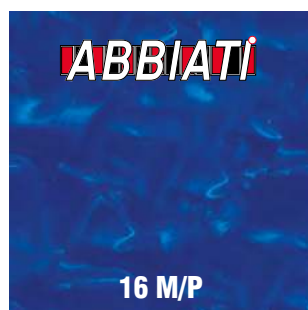
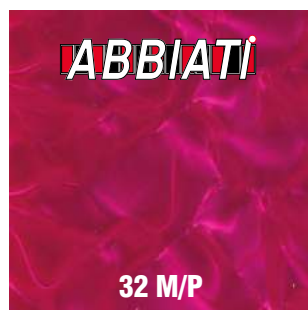
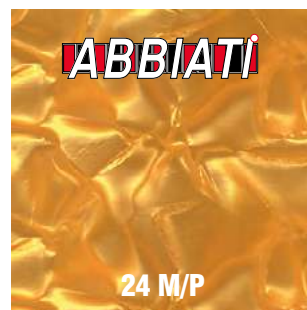
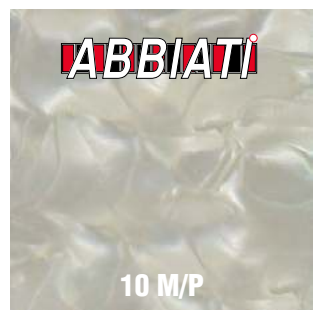


Use different
Layer Insert Colours
to recognize the set

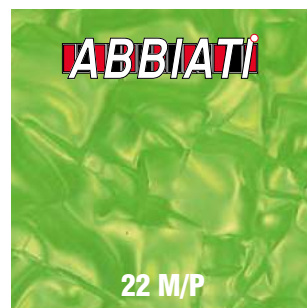


CENTRAL LAYER OPTIONS

STANDARD MOTHER OF PEARL (M/P)
COLOUR KIT FOR EUROPEAN JETONS & PLAQUES



STANDARD MOTHER OF PEARL (M/P)
COLOUR KIT FOR EUROPEAN JETONS & PLAQUES



INVERTED MOTHER OF PEARL (M/P - i)

COLOUR KIT FOR EUROPEAN JETONS & PLAQUES



INVERTED MOTHER OF PEARL (M/P - i)

COLOUR KIT FOR EUROPEAN JETONS & PLAQUES



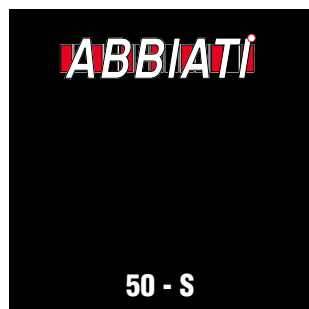
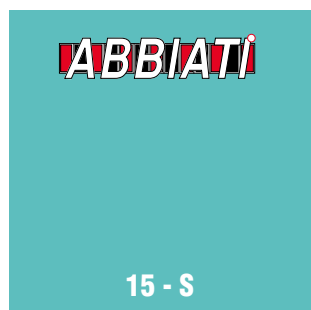
SOLID PLANE COLOUR (-S)

COLOUR KIT FOR EUROPEAN JETONS & PLAQUES, CENTRAL LAYER & CENTRAL LAYER INSERTS



SOLID PLANE COLOUR (-S)

COLOUR KIT FOR EUROPEAN JETONS & PLAQUES, CENTRAL LAYER & CENTRAL LAYER INSERTS



MOTHER OF PEARL



PREFERRED FOR LUNETTE



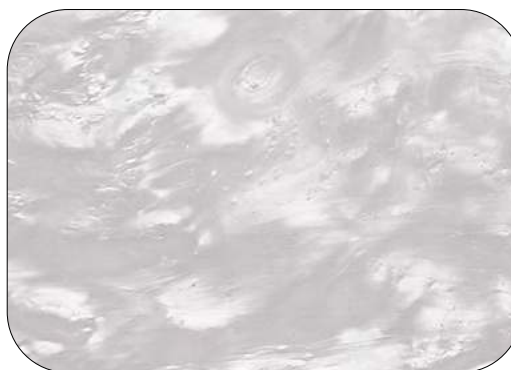
STANDARD DESIGN M/P



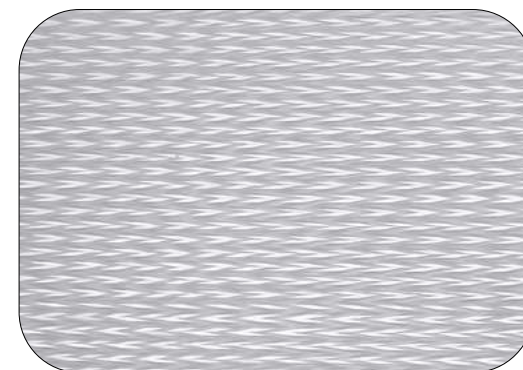
STANDARD COLOURED DESIGN M/P - 3



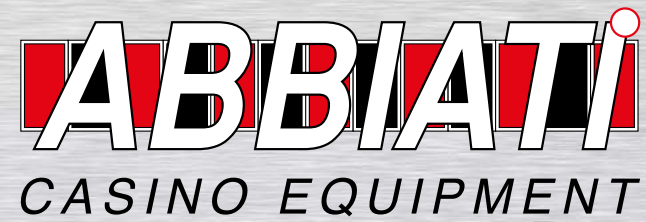
CUBE DESIGN M/P - 7



BIRDSEYE M/P - 8



FISHBONE M/P - 9



www.abbiati.com



ABBIATI CASINO EQUIPMENT S.r.l.

9, Strada della Risera - 10090 ROSTA (TORINO - ITALY) - Tel + 39 011 9567865 - Fax +39 011 9567871 - V.A.T.IT 06075960010 - info@abbiati.com

V. 001 - 2023