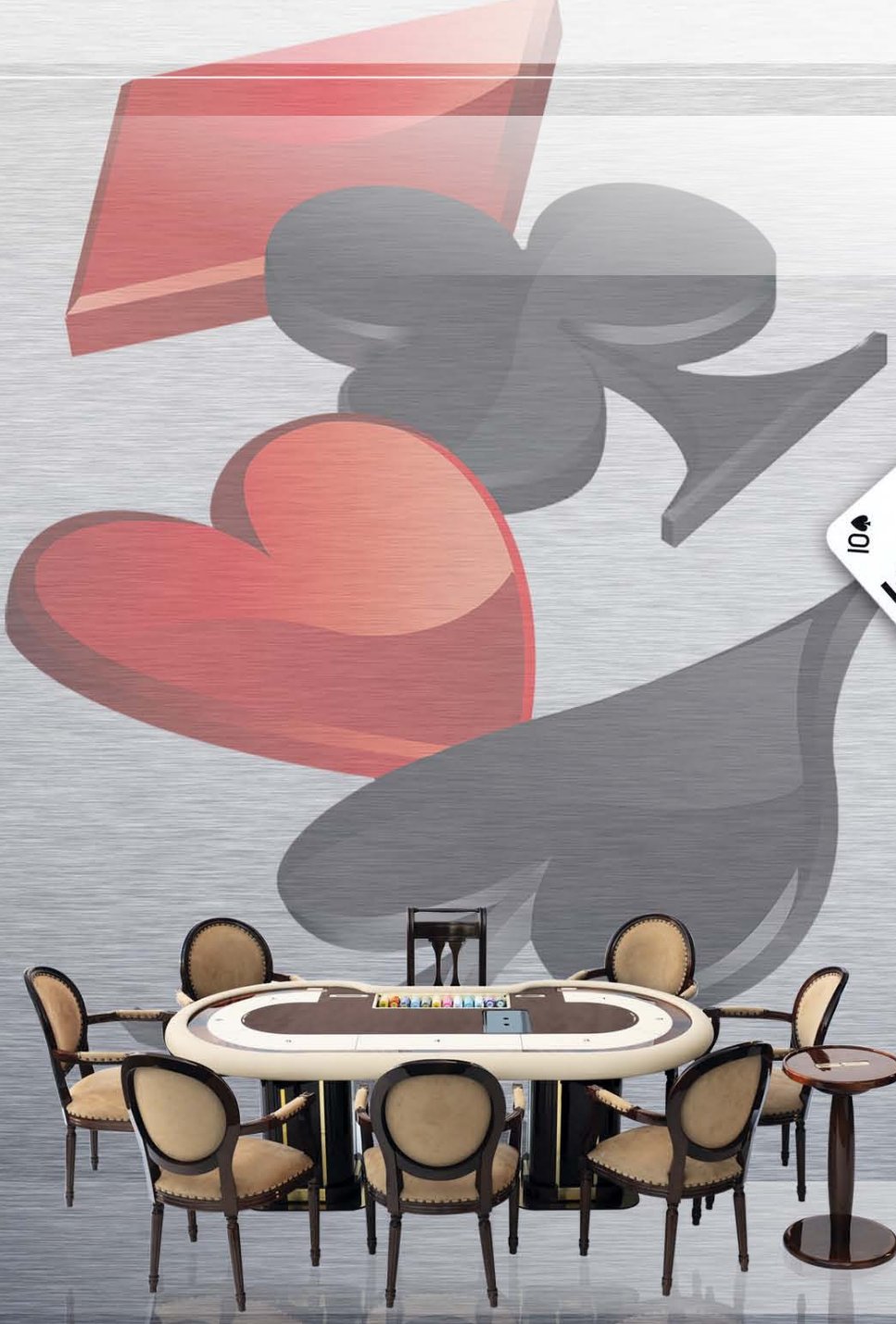


ITALIAN QUALITY & DESIGN

**ABBIATI**  
CASINO EQUIPMENT



**POKER DIVISION**

The Abbiati Company is privately owned by the Abbiati family and is based in Turin, Italy. Abbiati Casino Equipment has been in business in excess of 30 years and has had its professional articles for Casinos since 1976.

Abbiati has built up an international reputation and client base with almost every county and city that offers legalized gaming.

The company is on two sites within 50 metres from each other; one housing Office, Show Room and Production facilities and the other is used for assemblage and storage; with the option of expansion on both sites.

Abbiati Casino Equipment's main business is manufacturing and supplying Casino based equipment as used in live gaming: Roulette Wheels, Tables, Value Chips, Plaques and Jetons and all styles of gaming layouts (table felts) together with technical back up of full CAD design and technical services.

Our manufacturing facility is split into three main sections, all located under the same roof:

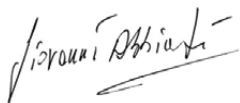
- Chips and Plaques are manufactured with the latest injection moulding machines, incorporating the latest RFID Technology using 13.56 MHz with PJM.
- Table and Roulette Wheel manufacture and assembly incorporate our CNC machining processes to ensure quality and precision, along with Layout (table felts) design and printing department for both wool and synthetic products.
- Electronic departments for the assemblage of Winning Number Displays, Laser Wheels and Independent electronic levelling systems for Roulette wheels.

All our manufacturing processes are supported by our Graphic and CAD Design department, to ensure Italian Quality and Design.

Quality, Service and Security are prime objectives for the Abbiati Company, which has secure rooms and high surveillance for the final assembly of the value chips incorporating RFID.

Our consistent growth and success stands as a witness of our continued commitment to deliver high quality, flawless products and services.

President  
Giovanni Abbiati





**PROFESSIONAL LINE**

**TEXAS POKER TABLE - Standard Model**



**PROFESSIONAL LINE**

**TEXAS POKER TABLE - Single Liner Wooden Border Style**





**PROFESSIONAL LINE**

TEXAS POKER TABLE - De Luxe Style





**PROFESSIONAL LINE**

**TEXAS POKER TABLE - Super De Luxe Style**



**PROFESSIONAL LINE**

TEXAS POKER TABLE - CORIAN® De Luxe Style





**TOURNAMENT LINE**

**TEXAS POKER TABLE - SPINDLE LEGS**



**Leather Padded Rail**

501  bianco white	905  sabbia sand	401  marrone brown	034  crema tan	038  giallo yellow	3017  rosso red	3014  granata dark red	385  vinaccia burgundy
800  verde scuro dark green	6020  celeste light blue	638  blu blue	162  grigio grey	102  nero black	864  verde chiaro light green	075  senape mustard	3074  arancione orange



Available also with Float Tray



**TOURNAMENT LINE**

**TEXAS POKER TABLE - TOWER LEGS**



**Leather Padded Rail**

501  bianco white	905  sabbia sand	401  marrone brown	034  crema tan	038  giallo yellow	3017  rosso red	3014  granata dark red	385  vinaccia burgundy
800  verde scuro dark green	6020  celeste light blue	638  blu blue	162  grigio grey	102  nero black	864  verde chiaro light green	075  senape mustard	3074  arancione orange



Available also with Float Tray



**TOURNAMENT LINE**

TEXAS POKER TABLE - 10 PLAYERS - 250 cm x 125 cm - h 78 cm



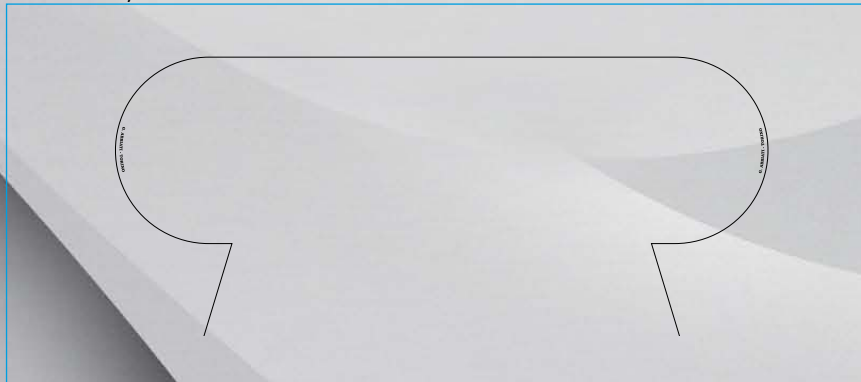


**TEXAS POKER LAYOUT**  
**STANDARD DESIGNS**

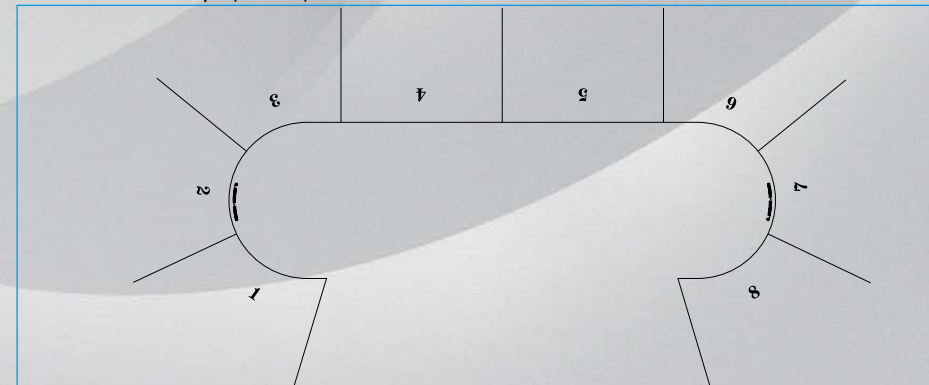
Oval Style



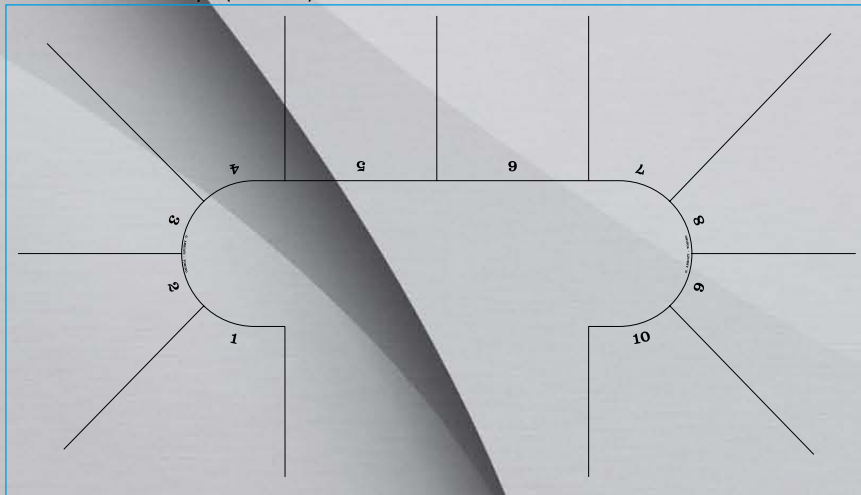
Mushroom Style



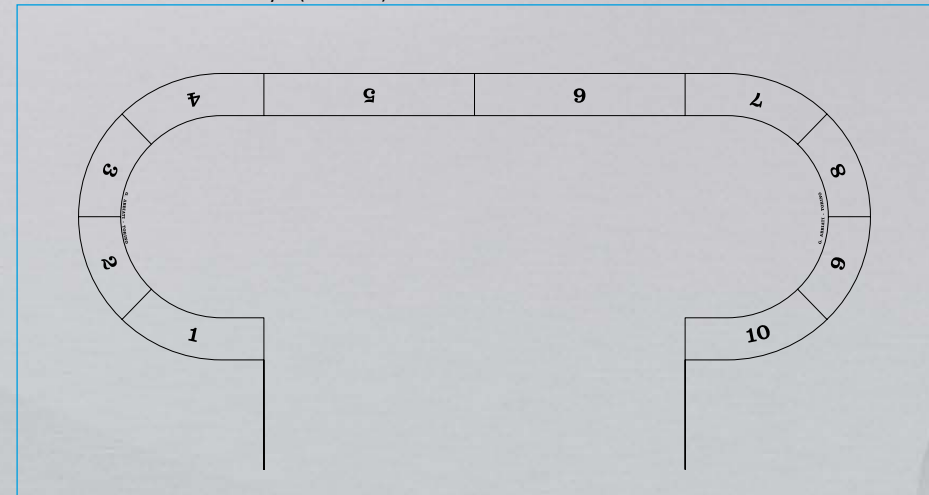
Line with Numbers Style (8 boxes)



Line with Numbers Style (10 boxes)



Double Line with Numbers Style (10 boxes)



**TEXAS POKER LAYOUT**  
CUSTOMIZED DESIGNS -Examples-

Oval Style



Oval Style



Oval Style



Mushroom Style



Mushroom Style





**TEXAS POKER LAYOUT**  
CUSTOMIZED DESIGNS -Examples-

Line with Numbers Style (9 boxes)



Line with Numbers Style (9 boxes)



Line with Numbers Style (10 boxes)



Line with Numbers Style (10 boxes)





## 39 mm

### STANDARD FULL GRAPHIC PRINTING

DIAMETER: 39 mm  
WEIGHT: 10 gr  
THICKNESS: 3 mm  
PRINT ON EDGE: not aligned  
CHIP BODY: smooth finishing



### POKER CHIPS FULL GRAPHIC PRINTING



### STANDARD HYBRID

DIAMETER: 39 mm  
WEIGHT: 9,5 gr  
THICKNESS: 3 mm  
PRINT ON EDGE: not aligned  
CHIP BODY: smooth finishing  
CHIP DECAL: gloss finishing



DECAL DIAMETER: 28,5 mm



DECAL DIAMETER: 25,5 mm

## 43 mm

### STANDARD FULL GRAPHIC PRINTING

DIAMETER: 43 mm  
WEIGHT: 12,5 gr  
THICKNESS: 3 mm  
PRINT ON EDGE: not aligned  
CHIP BODY: smooth finishing



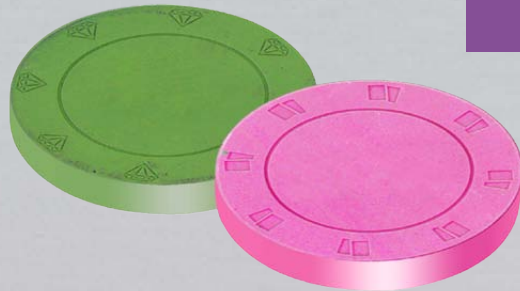
### STANDARD HYBRID

DIAMETER: 43 mm - DECAL DIAMETER.: 31,7 mm  
WEIGHT: 12 gr  
THICKNESS: 3,2 mm  
PRINT ON EDGE: not aligned  
CHIP BODY: smooth finishing  
CHIP DECAL: gloss finishing





39 mm



**MONOCOLOR**

DIAMETER: 39 mm - WEIGHT: 10 gr  
THICKNESS: 3 mm  
CHIP BODY: smooth finishing  
PATTERN: Cards or Diamonds



**CLAY STYLE**

DIAMETER: 39 mm - WEIGHT: 10,5 gr  
THICKNESS: 3 mm  
PRINT ON EDGE: **ALIGNED**  
CHIP BODY: smooth finishing

**POKER CHIPS  
FULL GRAPHIC PRINTING**

44 x 44mm



**OCTAGONAL FULL GRAPHIC PRINTING**

SIZE: 44x44 mm - WEIGHT: 13,2 gr  
EDGE: 18 mm x 8 sides  
THICKNESS: 3 mm  
PRINT ON EDGE: not aligned  
CHIP BODY: smooth finishing

47 mm



**STANDARD FULL GRAPHIC PRINTING  
available ONLY with U.V. CODE**

DIAMETER: 47 mm  
WEIGHT: 14,2 gr  
THICKNESS: 3 mm  
PRINT ON EDGE: not aligned  
CHIP BODY: smooth finishing

**DEALER BUTTON**

49 mm



60 mm



**DEALER BUTTON FULL GRAPHIC PRINTING**

DIAMETER: 49 mm - WEIGHT: 27 gr  
DIAMETER: 60 mm - WEIGHT: 39 gr  
THICKNESS: 5,5 mm  
PRINT ON EDGE: not aligned  
DEALER BODY: smooth finishing



## CREDIT CARD PLAQUES

Smooth finishing - 3,5 mm Thickness - Print on Edge not aligned



CREDIT CARD SIZE: 53x85mm - 41 gr

## OVAL PLAQUES

Smooth finishing - 5mm Thickness - Print on Edge not aligned



SMALL SIZE: 48x68 mm - 32 gr  
 MEDIUM SIZE: 57x82 mm - 45 gr  
 LARGE SIZE: 66x94 mm - 65 gr  
 EXTRA LARGE SIZE: 75x107 mm - 82 gr

## RECTANGULAR PLAQUES

Smooth finishing - 5 mm Thickness - Print on Edge not aligned



SMALL SIZE: 48x68 mm - 40 gr  
 MEDIUM SIZE: 57x82 mm - 45 gr  
 LARGE SIZE: 66x94 mm - 75 gr  
 EXTRA LARGE SIZE: 75x107 mm - 80 gr

## POKER PLAQUES

### FULL GRAPHIC PRINTING



## MODIANO PLAYING CARDS

100% PLASTIC



### MOD. GOLDEN TROPHY



### MOD. BIKE TROPHY & JUMBO BIKE



MODIANO offers a variety of options to customize the cards. Create your personal cards: our staff will assist you, starting from the choice of the graphic layout up to fulfillment of the finished product.

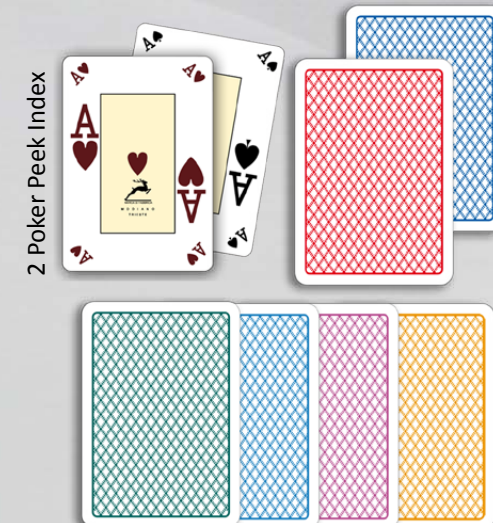
### MOD. TEXAS POKER



### MOD. POKER 4 JUMBO



### MOD. POKER PEEK



## CHAIRS FOR POKER TOURNAMENT



### PLAYER ONE

Width 46 cm  
Depth 41 cm  
Hight Seat 48 cm  
Total Hight 88 cm



### PLAYER TWO

Width 46 cm  
Depth 41 cm  
Hight Seat 48 cm  
Total Hight 88 cm



### SALZBURG

Width 46 cm  
Depth 41 cm  
Hight Seat 48 cm  
Total Hight 88 cm



### EMPLOYEES WHEELS

Width 43 cm  
Depth 42 cm  
Hight Seat 48 cm  
Adjustable Hight 43-76 cm



PADDED SEAT COVERED  
IN BREATHABLE FABRIC



## CHAIRS FOR POKER TOURNAMENT

Details



### 200

Width 41 cm  
Depth 41 cm  
Hight Seat 50 cm  
Total Hight 95 cm  
Chairs in chrome  
upholstery in different colours



### 202

Width 41 cm  
Depth 41 cm  
Hight Seat 50 cm  
Total Hight 95 cm  
Chairs in chrome  
upholstery in different colours





[www.abbiati.com](http://www.abbiati.com)



**ABBIATI CASINO EQUIPMENT s.n.c.**

9, Strada della Risera - 10090 ROSTA (TORINO - ITALY) - Tel + 39 011 9567865 - Fax +39 011 9567871 - V.A.T.IT 06075960010 - [info@abbiati.com](mailto:info@abbiati.com)

V. 003 - 2013